

# Cal-Van TOOLS

The 3PC Body Cutting Chisel Set is made from professional-grade, hardened steel. It comes with three angled chisels; flat, 15° and 90°. The chisels boast an oval cutting surface that can be re-ground for a sharp blade. An indispensable paint and body repair chisel set designed for separating spot-welded panels.

- Included EVA foam tray
- Three angled Chisels: Flat, 15° angled body, 90° angled body
- Cutting chisels with oval surface
- Soft handle for safe operation and less fatigue
- Able to be re-ground

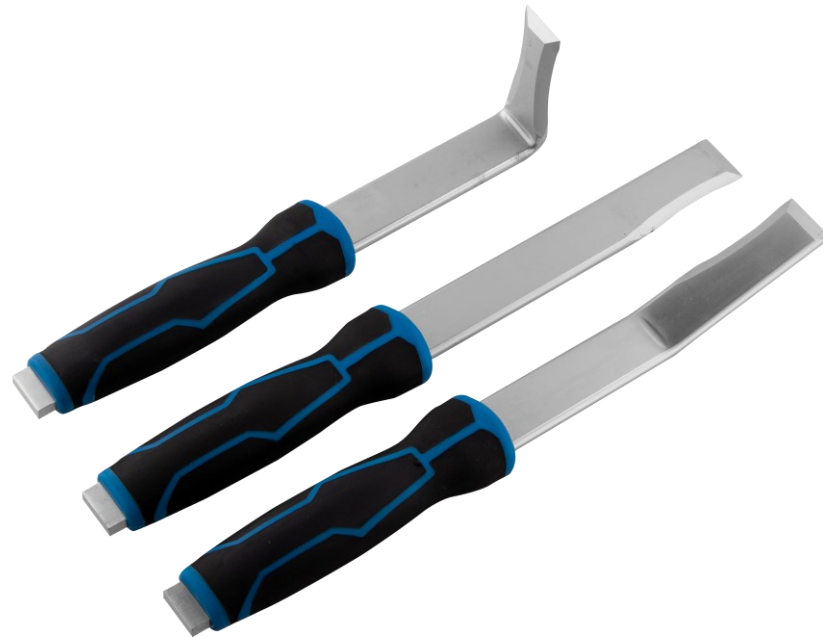
Package Type: Box with Label

Dimensions: 15.75" x 6.1" x 1.77"

Warranty: Lifetime vs. Mfg Defect

UPC: 047084136003

## 13600CV 3 PC Body Cutting Chisel Set



Applications:  
Universal

