

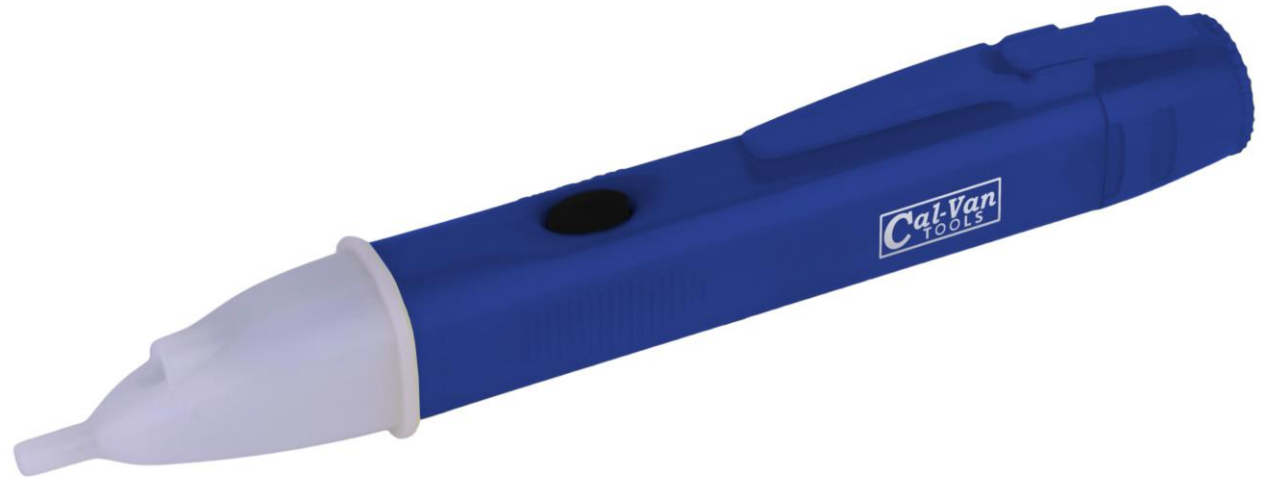


Part No. 82000

Magnetic Field Detector

A quick and easy way to detect magnetic fields. Just place the tip of the probe on any AC, DC, or permanent magnet, and it will illuminate if a magnetic field is present.

- Diagnose electrical solenoid valves in automotive applications or on pneumatic and hydraulic equipment
- Use to test various solenoids and coiled relays common in many vehicles, oil burners, and machinery
- Can even be used to check audio speaker magnets
- It includes an integrated tester magnet to ensure the device is always working
- The test tip has a built-in LED flashlight



Package Type: Clamshell

Dimensions: 6.25" x .95" x .73"

UPC: 047084820001

Warranty: Limited Lifetime Against Defects

Applications:

AC, DC, and permanent magnets common in various applications, including but not limited to automotive, industrial equipment, machinery, etc.

Replacement Parts Available:

82001 Battery End Cap

82002 Magnetic Cap

