

Safety Warning:

Read all instructions and warnings before attempting to use this product. Failure to comply can result in damage, injury, or possibly death. Consult the vehicle’s service manual before using this product for specific removal instructions.

- Stay alert! Be aware of your surroundings and use common sense when operating this tool.
 - Inspect tool for damage prior to using; do not use if tool is in unsafe condition.
- Always use safety equipment. Approved face and eye protection must be always worn in the work area.
 - Keep hair, clothing, jewelry, and gloves away from any moving parts at all times.

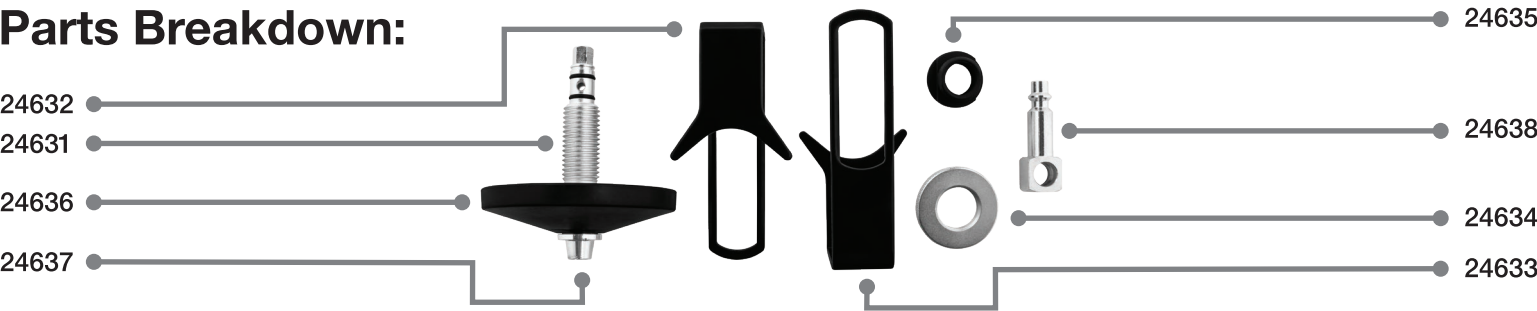
Operating Instructions:

Brake refilling adapter with a 90° rotating coupling
Fits master cylinder fill neck between 1.0" - 3.1" (26-79mm)
Maximum pressure up to 3.5 bar/ 50 psi

Interior Diameter	Minimum: 1" Maximum: 2.76"
Wing Width	Minimum: 4.5" Maximum: 7.1"
Distance Between Wings and Cone	Maximum: 0.56"
Overall Height	Minimum: 3.54" Maximum: 3.78"

1. Unscrew the threaded adapter nut to adjust the opening of the wings by pulling them apart.
2. Fit the brake bleeder adapter on the master cylinder reservoir and adjust the wings to loosely fit on the filler neck of cylinder reservoir.
3. Adjust the height by screwing the threaded adapter nut and secure the adapter by turning the threaded adapter nut clockwise.
4. Make sure the brake bleeder adapter is securely connected on the master cylinder reservoirs filler neck before connecting the adapter to brake service machines.

Parts Breakdown:



Part Number	Description	Qty.
24631	Adjusting Screw	1
24632	Right Side Wing	1
24633	Left Side Wing	1
24634	Threaded Adapter Nut	1
24635	Lower Collar Nut	1
24636	Rubber Cone	1
24637	Bottom Adapter	1
24638	Male Coupler M-Type	1