



Part No. **200**

UNIVERSAL TORSION BAR UNLOADING TOOL

Caution:

Read instructions and manual before using this product.

Always wear OSHA approved protective eyewear and gloves when using this tool.

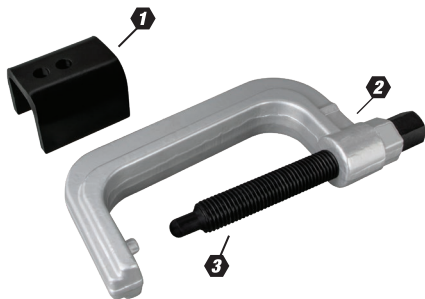
Be cautious when using this tool; torsion bars operate under extreme pressure. Make sure you remove pressure and tension from all suspension components before beginning to remove the torsion bars.

Components:

1. Indexing Adapter
2. C-Frame
3. Pressure Screw

Removal:

1. Take pressure off of the suspension by getting the tires completely off the ground. Always be sure the vehicle wheels are chocked before using a jack.
2. Record the current length of the torque arm adjusting bolt or the position of the torque arm itself to maintain the correct ride height after reinstallation.
3. Remove the torque arm adjusting bolt from the torsion bar arm stop. You may need to use penetrating oil to free the bolt.
4. Place the indexing tab of the tool C-frame in the hole on the top side of the crossmember. Use the adapter on non-GM vehicles.
5. Tighten the tool's pressure screw into the bottom side of the torsion bar arm. Keep tightening until the pressure is off of the threaded torsion bar arm stop and remove the stop.
6. Slowly loosen the pressure screw until you can remove the torsion bar unloading tool.



Installation:

1. Place the indexing tab of the tool C-frame in the hole on the top side of the crossmember. Use the adapter on non-GM vehicles.
 2. Tighten the pressure screw into the the bottom side of the torsion bar arm. Tighten until you can reinstall the torsion bar arm stop.
 3. Slowly loosen the pressure screw until the torsion bar arm rests on the stop.
 4. Reinstall and tighten the torsion bar adjusting bolt to the original measured length or until the torsion bar has been returned to its original position.
 5. Put the tires back on the ground. Bounce the front of the vehicle a few times and confirm the ride height.
 6. If needed, adjust the ride height. A front-end alignment is always recommended after any suspension repair.
- Note: These instructions are not vehicle specific. Additional steps may be required for other applications.