

# BEARING SEPARATOR PUSHER AND PULLER SET

<b>WEIGHT (LBS.)</b>	10.30
<b>DIMENSIONS (IN.)</b>	14.88 X 2.06 X 9.38
<b>COUNTRY OF ORIGIN</b>	TAIWAN
<b>BRANDING</b>	N/A
<b>PACKAGING</b>	BMC W/ OUTER LABEL

## PARTS BREAKDOWN

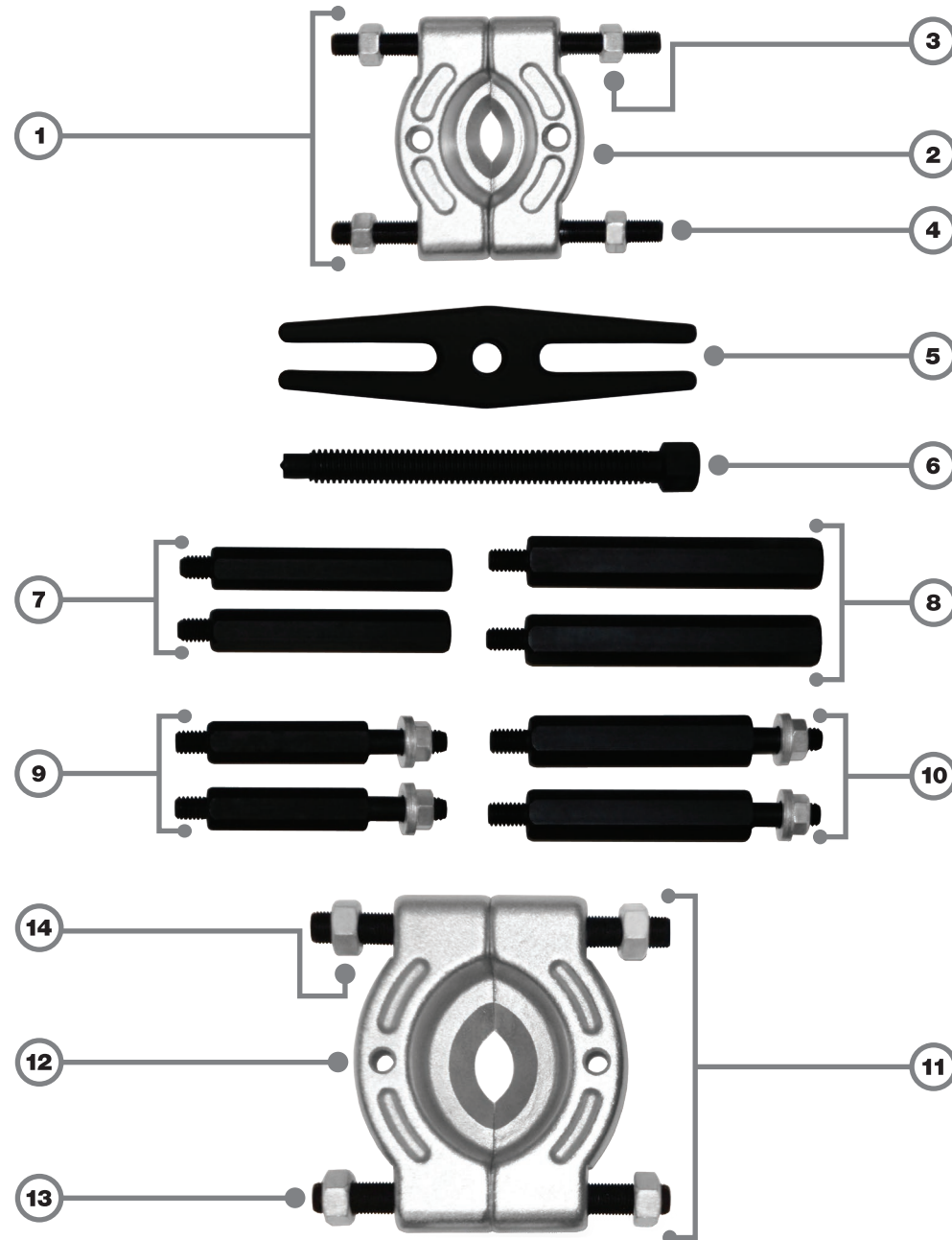


FIGURE NO.	PART NO.	DESCRIPTION	NO. REQD
1	500	SMALL BEARING SPLITTER	1
2	500-100	SMALL BODY 2" CAPACITY	2
3	500-1	HEX NUT 3/8-24	4
4	500-2	SIDE SCREW 3/8-24	2
5	502-100	5" PULL CROSS BAR	1
6	502-200	CENTER SCREW 9/16-16	1
7	502-1	SHORT LEG 3/8-16	2
8	502-2	LONG LEG 3/8-16	2
9	502-3	DOUBLE END LEG SHORT 3/8-16	2
10	502-4	DOUBLE END LONG LEG 3/8-16	2
11	503	LARGE BEARING SPLITTER	1
12	503-100	LARGE BODY 3" CAPACITY	2
13	503-2	SIDE SCREW 1/2-20	2
14	952-22A	HEX NUT 1/2-20	4
15	94996	BLOW MOLDED CASE (NOT SHOWN)	1